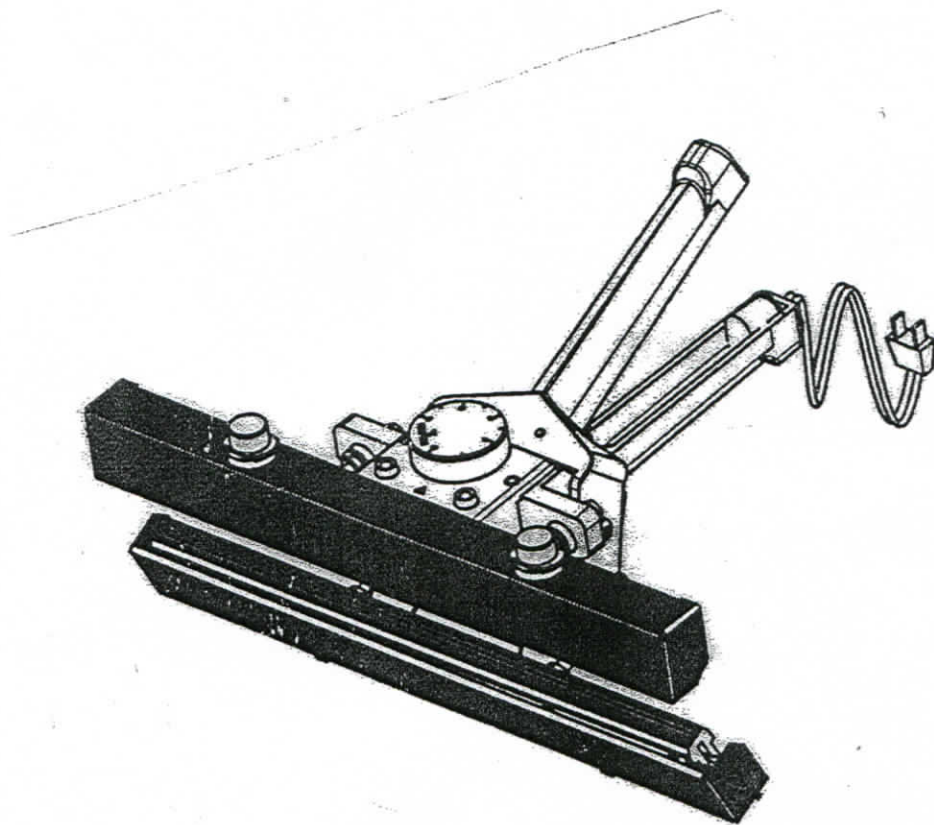


HAND HELD CRIMP SEALER

300DH, 400DH

INSTRUCTION MANUAL

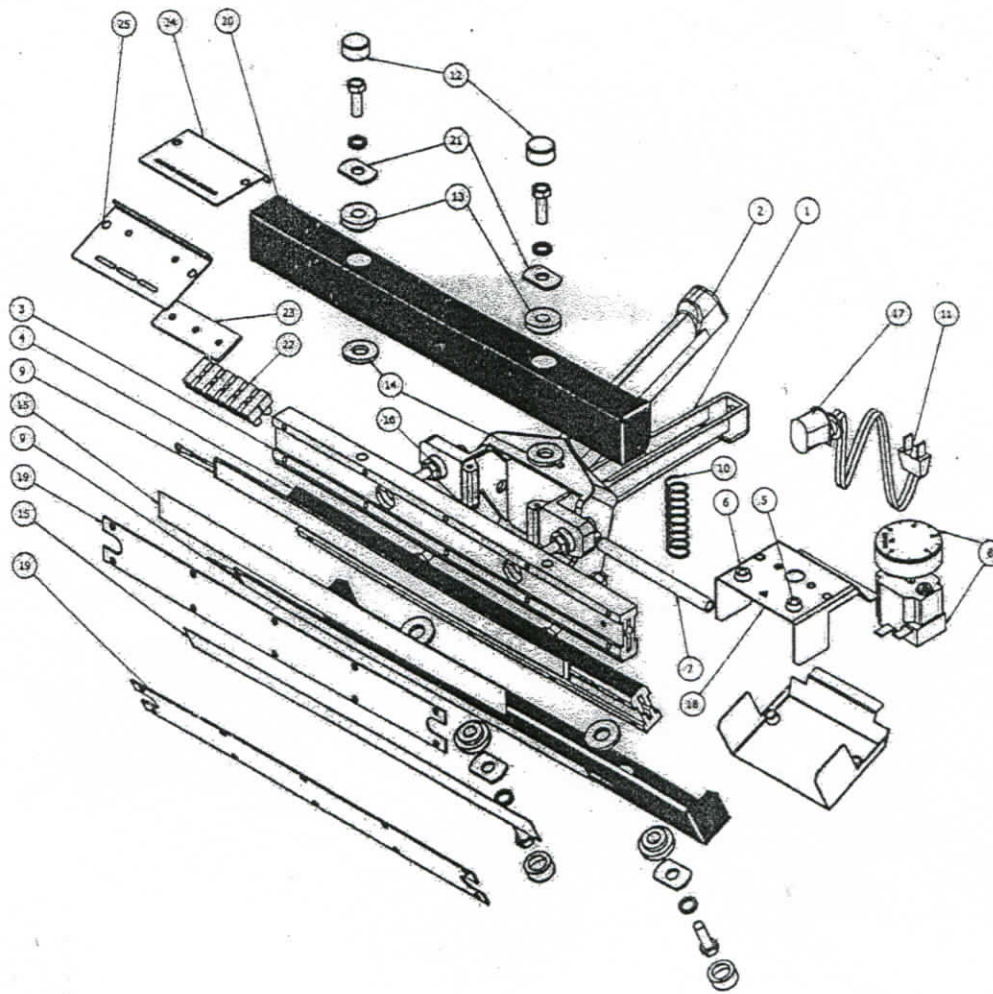


CE

Perfect For:

- *Constant heat for Cellophane & Foil.
- *Covered two 12mm wide heated Jaws for Cellophane, Wax Paper, Foils, Aluminum-Laminates And Heat Seal-able Labels.
- *Light weight and easy to grip.
- *Equipped with temperature controller and working light.
- * PTFE coated Seal Jaws.
- * Vertical line embossed seal.
- * The 3.0 meter power lead.

1. CONSTRUCTION DIAGRAM



2. PARTS LIST

- | | |
|---------------------------------|----------------------------|
| 1) Enclosure Body Lever(Upper) | 13) Silicon Rubber Pad |
| 2) Enclosure Body Lever (Lower) | 14) Heat Insulation Washer |
| 3) Upper Sealing Jaw | 15) PTFE Cloth Shell |
| 4) Lower Sealing Jaw | 16) Heat Insulation Tube |
| 5) Power Indication Lamp | 17) Bushing |
| 6) Heating Indication Lamp | 18) Control Penal |
| 7) Bolt Pin | 19) Heater Fixed Cover |
| 8) Temp. Controller & Switch | 20) Jaws Protection Cover |
| 9) Heater | 21) Red Washer |
| 10) Return Spring | 22) Terminal Block |
| 11) Power Plug | 23) Insulation Plate |
| 12) PTFE Nut | 24) Upper Aluminum Cover |
| | 25) Lower Aluminum Cover |

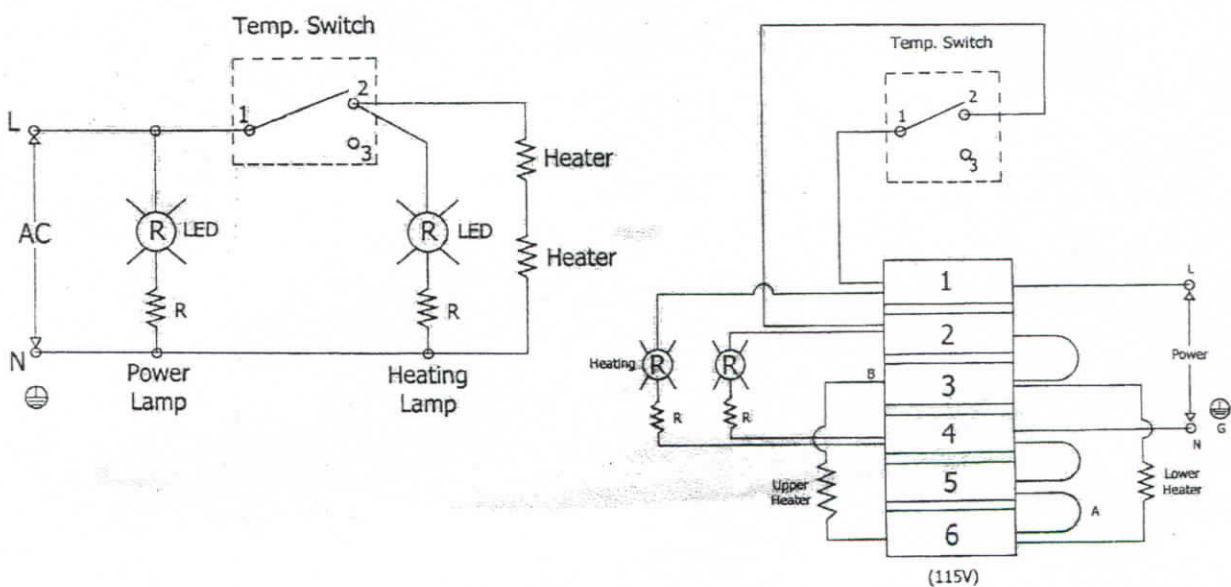
3. OPERATING INSTRUCTIONS

1. Connect power supply plug to AC outlet, the Power light appears indicating power to the unit.
2. Turn on temperature switch. Heating light appears, Adjust the temp. control knob to the 100°C suitable scale for thickness and material of bag. The heating light will go off about two minutes, it is the heating time.
3. Adjust the temperature knob to suitable scale for sealing material.
4. If sealing is not complete, turn the Temp. control knob up and repeat process in "3" program. Setting temp. control knob to increase the temperature until you get desired seal.
5. TURN OFF MACHINE WHEN NOT IN USE

THE TEMPERATURE CONTROLLER IS CALIBRATED IN CENTIGRADE °C TO CONVERT TO FATHRENHEIT °F ($^{\circ}\text{C} \times 8/5 + 32 = ^{\circ}\text{F}$)

FOR SAFETY KEEP HANDS AND FINGERS AWAY FROM THE JAWS OR HEX NUTS.

4. ELECTRIC CONNECTION DIAGRAM



5. SPECIFICATIONS

MODEL	300DH	400DH
Max. Seal Length	300 mm (12")	400 mm (16")
Seal Width	12 mm	12 mm
Max. Seal Thickness	2x0.15mm(Aluminum Bag)	2x0.15mm(Aluminum Bag)
Temp. Range	50-200°C	50-200°C
Watts	320W	420W
Weight	2.5 Kg	3.5 Kg

6. CAUTIONARY MARKING

CAUTION:

- 1) To reduce the risk of shock, disconnect the unit from the supply circuit before servicing the replacement of the heating element.
- 2) To provide continued protection against risk of electric shock, connect to properly grounded outlet only.

WARNING:

- 1) A live heating element is located in the jaw under the upper sealing plate. Use caution during operation. **DO NOT TOUCH THE ELEMENT.**
- 2) For continued protection against fire or electric shock, replace only with type cartridge and suitable ampere fuse, provided in legible adjacent to fuse holder.

7. HELPFUL INFORMATIC

- 1) Always keep the sealing platform clean. Particular care "should" be taken to remove any residue form the Seal Jaws.
- 2) Do not clean the sealing platform with anything wet.
- 3) Occasionally check the condition both side of the heater jaws. A poor sealer platform will effect on the quality of your seal.
- 4) Never touch to heater jaws for high temperature.
- 5) **USE ONLY GENUINE REPLACEMENT PARTS**